

**DEPARTMENT OF THE ARMY TECHNICAL MANUAL**

---

**OPERATOR'S, ORGANIZATIONAL, DIRECT SUPPORT, AND GENERAL  
SUPPORT MAINTENANCE REPAIR PARTS AND SPECIAL  
TOOLS LISTS (INCLUDING DEPOT MAINTENANCE  
REPAIR PARTS AND SPECIAL TOOLS)  
GONIOMETER, ELECTRICAL GO-12/FRN-20  
(FSN 5950-648-1400)**

---

**Headquarters, Department of the Army, Washington, D.C.  
28 February 1975**

---

Current as of December 1974

	Paragraph	Page
SECTION I. INTRODUCTION		
Scope	1-1	2
General	1-2	2
Explanation of columns	1-3	2
Special Information	1-4	4
Location of repair parts	1-5	4
Abbreviations (Not applicable)	1-6	5
Reporting of equipment manual improvements	1-7	5
II. BASIC ISSUE ITEMS LIST (Not applicable)		
III. ITEMS TROOP INSTALLED OR AUTHORIZED LIST (Not applicable)		
IV. PRESCRIBED LOAD ALLOWANCE (Not applicable)		
V. REPAIR PARTS LIST		6
VI. SPECIAL TOOLS, TEST AND SUPPORT EQUIPMENT (Not applicable)		
VII. REPAIR PARTS LIST		7
VIII. SPECIAL TOOLS, TEST AND SUPPORT EQUIPMENT (Not applicable)		
IX. INDEX - FEDERAL STOCK NUMBER AND REFERENCE NUMBER CROSS-REFERENCE TO FIGURE AND ITEM NUMBER		12

---

\*This manual supersedes TM 11-5950-202-12P, 11 March 1969 and TM 11-5950-202-34P, 11 March 1969.

# SECTION I INTRODUCTION

## 1-1. Scope

**This manual lists basic issue items, items troop installed or authorized, repair parts, and special tools required by the crew/operator for operation and required for the performance of organizational, direct support, general support, and depot maintenance of the GO-12/FRN-20. The PCCN for the GO-12/FRN-20 is GANACM for all models.**

## 1-2. General

This basic issue items, items troop installed or authorized, repair parts, and special tools list is divided into the following sections -

a. Basic Issue Items List - Section II. Not applicable.

b. Items Troop Installed or Authorized List - Section III. Not applicable.

c. Prescribed Load Allowance (PLA) -Section IV. Not applicable.

d. Repair Parts List - Section V. A list of repair parts authorized for the performance of maintenance at the organizational level. This repair parts list is arranged in alphabetical order.

e. Special Tools, Test and Support Equipment - Support VI. Not applicable.

f. Repair Parts List -Section VII. A list of repair parts authorized for the performance of maintenance at the direct support general support, and depot level.

g. Special Tools, Test and Support Equipment - Section VIII. Not applicable.

h. Index -Federal Stock Number and Reference Number Crow-Reference to Figure and Item Number -Section IX. A list, in ascending numerical sequence, of all Federal stock numbers appearing in the listings, followed by a list, in alphanumeric sequence, of all reference numbers appearing in the listings. Federal stock number and **reference numbers are cross-referenced to each illustration figure and item number or reference designation appearance.**

## 1-3. Explanation of Columns

**The following provides an explanation of columns found in the tabular list.**

**a. Source, Maintenance, and Recoverability Codes (SMR).**

**(1) Source code. Indicates the manner of acquiring support items for maintenance, repair, or overhaul of end items. Source codes are —**

Code	Explanation
P A -	Item procured and stocked for anticipated or known usage.
P B -	Item procured and stocked for insurance purposes because essentiality dictates that a minimum quantity be available in the supply systems.
P C -	Item procured and stocked and which otherwise would be coded PA except that it is deteriorative in nature.
P D -	Support item, excluding support equipment, procured for initial issue or outfitting and stocked only for subsequent or additional initial issues or outfittings. Not subject to automatic replenishment.
P E -	Support equipment procured and stocked for initial issue or outfitting to specified maintenance repair activities.
P F -	Support equipment which will not be stocked but which will be centrally procured on demand.
P G -	Item procured and stocked to provide for sustained support for the life of the equipment. It is applied to an item peculiar to the equipment which because of probable discontinuance or shutdown of production facilities would prove uneconomical to reproduce at a later time.
K D -	An item of depot overhaul/repair kit and not purchased separately. Depot kit defined as a kit that provides items required at the time of overhaul or repair.
K F -	An item of a maintenance kit <b>and not purchased separately. Maintenance kit defined as a kit that provides an item that can be replaced at organizational or direct support or general support levels of maintenance.</b>
KB —	Item included in both a depot overhaul/repair kit and a maintenance kit.
MO —	Item to be manufactured or fabricated at organizational level.
MF —	Item to be manufactured or fabricated at direct support maintenance level.
MH —	Item to be manufactured or fabricated at general support maintenance level.
MD —	Item to be manufactured or fabricated at depot maintenance level.
AO —	Item to be assembled at organizational level.
AF —	Item to be assembled at direct support maintenance level.

<i>Code</i>	<i>Explanation</i>
A H -	Item to be assembled at general support maintenance level.
A D -	Item to be assembled at depot maintenance level.
X A -	Item is not procured or stocked because the requirements for the item will result in the replacement of the next higher assembly.
X B -	Item is not procured or stocked. If not available through salvage, requisition.
X C -	Installation drawing, diagram instruction sheet, field service drawing, that is identified by manufacturer's part number.
X D -	Support items can be requisitioned with justification.

**NOTE**

Cannibalization or salvage may be used as a source of supply for any items source coded above except those coded XA and aircraft support items as restricted by AR 700-42.

(2) Maintenance code. Maintenance codes are assigned to indicate the levels of maintenance authorized to USE and REPAIR support items. The maintenance codes are entered in the third and fourth positions of the Uniform SMR Code Format as follows —

*(a) Use (third position).* The maintenance code entered in the third position indicates the lowest maintenance level authorized to remove, replace, and use the support item. The maintenance code entered in the third position indicates one of the following levels of maintenance.

<i>Code</i>	<i>Application/Explanation</i>
O —	Support item is removed, replaced, used at the organizational level of maintenance.
<b>NOTE</b>	
A code "C" may be used in this position to denote crew or operator maintenance performed within organizational maintenance.	
F —	Support item is removed, replaced, used at the direct support maintenance level.
H —	Support item is removed, replaced, used at the general support maintenance.
D —	Support items that are removed, replaced, used at depot only.

*(b) Repair (fourth position).* The maintenance code entered in the fourth position indicates whether the item is to be repaired and identifies the lowest maintenance level with the capability to perform complete repair (i.e., all authorized maintenance functions). When a maintenance code is not used a dash (-) sign is entered. For multi-service

equipment/systems or when a code is entered, this position will contain one of the following maintenance codes as assigned by the service(s) that require the code -

<i>Code</i>	<i>Application/Explanation</i>
O -	The lowest maintenance level capable of complete repair of the support item is the organizational level.
F -	The lowest maintenance level capable of complete repair of the support item is direct support
H -	The lowest maintenance level capable of complete repair of the support item is general support
D -	The lowest maintenance level capable of complete repair of the support item is the depot level.
L -	Repair restricted to designated Specialized Repair Activity.
Z -	Non-repairable. No repair is authorized.
<b>B —</b>	<b>No repair is authorized. The item may be reconditioned by adjusting, lubricating, etc., at the user level. No parts or special tools are procured for the maintenance of this item.</b>

*(3) Recoverability code.* Recoverability codes are assigned to support items to indicate the disposition action on unserviceable items. The recoverability code is entered in the fifth position of the uniform SMR Code Format as follows —

<i>Code</i>	<i>Explanation</i>
<b>Z —</b>	<b>Nonrepairable item. When unserviceable, condemn and dispose at the level indicated in the first digit of the maintenance code.</b>
<b>O —</b>	<b>Repairable item. When uneconomically repairable, condemn and dispose at organizational level.</b>
<b>F —</b>	<b>Repairable item. When uneconomically repairable, condemn and dispose at the direct support level.</b>
<b>H —</b>	<b>Repairable item. When uneconomically repairable, condemn and dispose at the general support level.</b>
<b>D —</b>	<b>Repairable item. When beyond lower level repair capability, return to depot. Condemnation and disposal not authorized below depot level.</b>
<b>L —</b>	<b>Repairable item. Repair, condemnation, and disposal not authorized below depot/Specialized Repair Activity level.</b>
<b>A —</b>	<b>Item requires special handling or condemnation procedures because of specific reasons (i.e., precious metal content, high dollar value, critical material or hazardous material).</b>

**h. Federal Stock Number.** Indicates the Federal stock number assigned to the item.

NOTE

For requisitioning purposes, the Federal stock number must be converted to the National stock number by adding "-00-" after the Federal stock classification (FSC) code (first four digits). For example, FSN 6625-553-0142 converts to NSN 6625-00-553-0142.

c. Description. Indicates the Federal item name and a minimum description required to identify the item. The last line indicates the reference number followed by the applicable Federal Supply Code for Manufacturer (FSCM) in parentheses. The FSCM is used as an element in item identification to designate manufacturer or distributor or Government agency, etc., and is identified in SB 708-42.

d. Unit of Measure (U/M). Indicates the standard or basic quantity by which the listed item is used in performing the actual maintenance function. This measure is expressed by a two-character alphabetical abbreviation, e.g., ea, in, pr, etc., and is the basis used to indicate quantities and allowances in subsequent columns. When the unit of measure differs from the unit of issue, the lowest unit of issue that will satisfy the required units of measure will be requisitioned.

e. Quantity Furnished with Equipment (Basic Issue Items Only). Not applicable.

f. Quantity Authorized (Items Troop Installed or Authorized Only). Not applicable.

g. Quantity Incorporated in Unit. This column indicates the quantity of the item used in the equipment. Subsequent appearances of the same item in the same assembly are indicated by the letters "REF".

h. 15-Day Organizational Maintenance Allowances.

(1) The repair parts indicated by an asterisk in the allowance column represent those authorized for use at the organizational category, and will be requisitioned on an "as required" basis, until stockage is based on demand in accordance with AR 710-2.

(2) Major Army commanders are authorized to approve reduction in the range of support items authorized for use in units within their commands. Recommendations for increase in range of items authorized for use will be forwarded to the Commander, US Army Electronics Command, ATTN: AMSEL-MA-AN, Fort Monmouth, N.J., 07703.

(3) Allowance quantities are indicated in the special tools list section for special tools, TMDE, and other support equipment.

i. 30-Day DS/GS Maintenance Allowances.

NOTE

Allowances in GS column are for GS maintenance only.

(1) The repair parts indicated by asterisk entries in separate allowance columns for DS and GS represent those authorized for use at that category of maintenance to be requisitioned on an "as required" basis, until stockage is based on demand in accordance with AR 710-2.

(2) Allowance quantities are indicated in the special tool lists section for special tools, TMDE, and other support equipment.

j. 1-Year Allowances Per 100 Equipments/Contingency Planning Purposes. Column intentionally left blank.

k. Depot Maintenance Allowance Per 100 Equipments. This column indicates opposite the first appearance of each item the total quantity authorized for depot maintenance of 100 equipments.

l. Illustration.

(1) Figure number. Not applicable.

(2) Item number. Indicates the item number or reference designation used to reference the item.

#### 1-4 Special Information

Usable on codes are included in column 3. Uncoded items are applicable to all models. Identification of the usable on codes used in this publication are -

Code	Used on
A8R	G0-12/FRN-20

#### 1-5. Location of Repair Parts

**a. This manual contains one cross reference index (sec IX) to be used to locate a repair part when either the Federal stock number or reference number (manufacturer's part number) is known. The first column in the index is prepared in numerical or alphanumeric sequence in ascending order. The reference numbers (manufacturer's part numbers) are listed immediately following the last listed Federal stock number in the index of Federal stock numbers.**

**b. When the Federal stock number or reference number is known, follow the procedures given in (1) and (2) below.**

(1) Refer to the index of Federal stock numbers (sec IX), and locate the Federal stock number or reference number. The FSN and reference number are cross-referenced to the applicable figure and item number or reference designation.

(2) Refer to the repair parts list (sec V and VII) and locate the figure number (col 7a - 20P).

**10a — 34P) and item number or reference designation (col 7b — 20P, 10b — 34P) as noted in the FSN index.**

c. When the figure and item number or reference designation are known, scrutinize columns 7a and 7b - 20P and 10a and 10b - 35P, of the repair parts list (sec V and VII) until the item is located.

d. When the FSN, reference number, figure number, and item number are not known, scrutinize column 3 of the repair parts list (sec V and VII), which is arranged in alphabetical order.

#### **1-6. Abbreviations**

Not applicable.

#### **1-7. Reporting of Equipment Manual Improvements**

The reporting of errors, omissions, and recommendations for improving this publication by the individual user is encouraged. Reports should be submitted on DA Form 2028 (Recommended Changes to Publications and Blank Forms) and forwarded direct to Commander, US Army Electronics Command, ATTN: AMSEL-MA-AN, Fort Monmouth, NJ., 07703.

## SECTION V

TM11-5950-202-14P

(1) SMR CODE	(2) FEDERAL STOCK NUMBER	(3) DESCRIPTION REFERENCE NUMBER & MFR CODE      USABLE ON CODE		(4) UNIT OF MEAS	(5) QTY INC IN UNIT	(6) 15-DAY ORGANIZATIONAL MAINTENANCE ALW				(7) ILLUSTRATION		
						(a)	(b)	(c)	(d)	(a)	(b)	
						1-5	6-20	21-50	51-100	FIGURE NO	ITEM NO	
PACZZ	5920-199-3968	FUSE, CARTRIDGE 54 AND 42747-PH-57 MOLB-10 (71400)	F1	USED ON MODELS 24782-PH-	EA	1	*	*	*	*		F1

## SECTION VII

TM11-5950-202-14P

(1) SMR CODE	(2) FEDERAL STOCK NUMBER	(3) DESCRIPTION REFERENCE NUMBER & MFR CODE USABLE ON CODE	(4) UNIT OF MEAS	(5) QTY INC IN UNIT	(6) 30-DAY DS MAINT ALLOWANCE			(7) 30-DAY GS MAINT ALLOWANCE			(8) 1-YR ALW PER 100 EQUIP CNTGCT	(9) DEPOT MAINT ALW PER 100 EQUIP	(10) ILLUSTRATION	
					(a)	(b)	(c)	(a)	(b)	(c)			(a)	(b)
					1-20	21-50	51-100	1-20	21-50	51-100			FIGURE NO	ITEM NO
PAFZZ	5935-904-4050	ADAPTER, CONNECTOR NO-REF-DESIG USED ON MODELS 24782-PH-54 AND 42747-PH-57	EA	3	*	*	*	*	*	*		4		
PAFZZ	5905-583-6428	UG278C (80058) ATTENUATOR, VARIABLE R17 USED ON MODEL 42747-PH-57	EA	2	*	*	*	*	*	*		5		R17
PAFZZ	5905-583-6428	JM9598 (71450) ATTENUATOR, VARIABLE R18 USED ON MODEL 42747-PH-57	EA	REF	*	*	*	*	*	*				R18
PAFZZ	5905-500-6847	JM9598 (71450) ATTENUATOR, VARIABLE R17 USED ON MODEL. 24782-PH-54	EA	2	*	*	*	*	*	*		5		R17
PAFZZ	5905-500-6847	MX148 (71590) ATTENUATOR, VARIABLE R18 USED ON MODEL. 24782-PH-54	EA	REF	*	*	*	*	*	*				R18
PAFZZ	3030-203-1586	MX148 (71590) BELT, POSITIVE DRIVE NO-REF-DESIG USED.. ON MODELS 24782-PH-54 AND 42747-PH-57	EA	1	*	*	*	*	*	*		40		
XDFZZ		9350X1-2INP3010 (90179) CAP, ELECTRICAL NO-REF-DESIG CAP FOR HCM FUSEHOLDER USED ON MODELS 24782-PH-54 AND 42747-PH-57	EA	1	*	*	*	*	*	*				
XDFZZ		9327 (71400) CAPACITOR, FIXED, MICA DIELECTRIC C9... USED ON MODELS 24782-PH-54 AND 42747-PH- 57	EA	2	*	*	*	*	*	*				C9
XDFZZ		CM208101K (81349) CAPACITOR, FIXED, MICA DIELECTRIC C10... USED ON MODELS 24782-PH-54 AND 42747-PH- 57	EA	REF	*	*	*	*	*	*				C10
PAFZZ	5910-762-2945	CM208101K (81349) CAPACITOR, FIXED, MICA DIELECTRIC C14... USED ON MODELS 24782-PH-54 AND 42747-PH- 57	EA	1	*	*	*	*	*	*		3		C14
PAFZZ	5910-899-2538	CM208471K (81349) CAPACITOR, FIXED, MICA DIELECTRIC C3... USED ON MODELS 24782-PH-54 AND 42747-PH- 57	EA	2	*	*	*	*	*	*		3		C3
PAFZZ	5910-899-2538	CM208271K (81349) CAPACITOR, FIXED, MICA DIELECTRIC C7... USED ON MODELS 24782-PH-54 AND 42747-PH- 57	EA	REF	*	*	*	*	*	*				C7
XDFZZ		CM208271K (81349) CAPACITOR, FIXED, MICA DIELECTRIC C12... USED ON MODELS 24782-PH-54 AND 42747-PH- 57	EA	1	*	*	*	*	*	*				C12
XDFZZ		CM308102K (81349) CAPACITOR, FIXED, MICA DIELECTRIC C13... USED ON MODELS 24782-PH-54 AND 42747-PH- 57	EA	1	*	*	*	*	*	*				C13
XDFZZ		CM308222K (81349) CAPACITOR, FIXED, MICA DIELECTRIC C1... USED ON MODELS 24782-PH-54 AND 42747-PH- 57	EA	2	*	*	*	*	*	*				C1

SECTION VII

TM11-5950-202-14P

(1) SMR CODE	(2) FEDERAL STOCK NUMBER	(3) DESCRIPTION REFERENCE NUMBER & MFR CODE USABLE ON CODE	(4) UNIT OF MEAS	(5) QTY INC IN UNIT	(6) 30-DAY DS MAINT ALLOWANCE			(7) 30-DAY GS MAINT ALLOWANCE			(8) 1-YR ALW PER 100 EQUIP CNTGCV	(9) DEPOT MAINT ALW PER 100 EQUIP	(10) ILLUSTRATION	
					(a)	(b)	(c)	(a)	(b)	(c)			(a)	(b)
					1-20	21-50	51-100	1-20	21-50	51-100			FIGURE NO	ITEM NO
		CONTINUED												
XDFZZ		57 CM30E252-1PCT (53021) CAPACITOR, FIXED, MICA DIELECTRIC C5... USED ON MODELS 24782-PH-54 AND 42747-PH-57	EA	REF	*	*	*	*	*	*			C5	
XDFZZ		CM30E252-1PCT (53021) CAPACITOR, FIXED, CERAMIC DIELECTRIC C4 USED ON MODELS 24782-PH-54 AND 42747-PH-57	EA	4	*	*	*	*	*	*			C4	
XDFZZ		CK63Y103Z (81349) CAPACITOR, FIXED, CERAMIC DIELECTRIC C8 USED ON MODELS 24782-PH-54 AND 42747-PH-57	EA	REF	*	*	*	*	*	*			C8	
XDFZZ		CK63Y103Z (81349) CAPACITOR, FIXED, CERAMIC DIELECTRIC C11 USED ON MODELS 24782-PH-54 AND 42747-PH-57	EA	REF	*	*	*	*	*	*			C11	
XDFZZ		CK63Y103Z (81349) CAPACITOR, FIXED, CERAMIC DIELECTRIC C19 USED ON MODELS 24782-PH-54 AND 42747-PH-57	EA	REF	*	*	*	*	*	*			C19	
XDFZZ		CK63Y103Z (81349) CAPACITOR, FIXED, PAPER DIELECTRIC C15.. USED ON MODEL 42747-PH-57	EA	2	*	*	*	*	*	*			C15	
XDFZZ		CP65B10E105K (81349) CAPACITOR, FIXED, PAPER DIELECTRIC C16.. USED ON MODEL 42747-PH-57	EA	REF	*	*	*	*	*	*			C16	
PAFZZ	5910-171-3214	CP65B10E105K (81349) CAPACITOR, FIXED, PAPER DIELECTRIC C15.. USED ON MODEL 24782-PH-54	EA	2	*	*	*	*	*	*	3		C15	
PAFZZ	5910-171-3214	CP65B1EF105K (81349) CAPACITOR, FIXED, PAPER DIELECTRIC C16.. USED ON MODEL 24782-PH-54	EA	REF	*	*	*	*	*	*			C16	
PAFZZ	5910-112-7399	CP65B1EF105K (81349) CAPACITOR, FIXED, PAPER DIELECTRIC C20.. USED ON MODELS 24782-PH-54 AND 42747-PH-57	EA	1	*	*	*	*	*	*	3		C20	
XDFZZ		CP53B1EF205K (81349) CAPACITOR, FIXED, PAPER DIELECTRIC C21.. USED ON MODEL 42747-PH-57	EA	1	*	*	*	*	*	*			C21	
PAFZZ	5910-521-7918	CMA3030 (14655) CAPACITOR, FIXED, PAPER DIELECTRIC C21.. USED ON MODEL 24782-PH-54	EA	1	*	*	*	*	*	*	3		C21	
PAFZZ	5950-524-0039	CMA3050-7 (14655) CAPACITOR ASSEMBLY NO-REF-DESIG USED ON MODELS 24782-PH-54 AND 42747-PH-57	EA	1	*	*	*	*	*	*	3			
PAFZZ	5950-228-7598	116088 (65597) COIL, RADIO FREQUENCY L3 USED ON..... MODELS 24782-PH-54 AND 42747-PH-57	EA	1	*	*	*	*	*	*	3		L3	
PAFZZ	5935-835-0508	19-6848 (96256) CONNECTOR, PLUG, ELECTRICAL NO-REF-DESIG. CONTINUED	EA	1	*	*	*	*	*	*	3			



## SECTION VII

TM11-5950-202-14P

(1) SMR CODE	(2) FEDERAL STOCK NUMBER	(3) DESCRIPTION REFERENCE NUMBER & MFR CODE    USABLE ON CODE	(4) UNIT OF MEAS	(5) QTY INC IN UNIT	(6) 30-DAY DS MAINT ALLOWANCE			(7) 30-DAY GS MAINT ALLOWANCE			(8) 1-YR ALW PER 100 EQUIP CNTGCTY	(9) DEPOT MAINT ALW PER 100 EQUIP	(10) ILLUSTRATION	
					(a)	(b)	(c)	(a)	(b)	(c)			(a)	(b)
					1-20	21-50	51-100	1-20	21-50	51-100			FIGURE NO	ITEM NO
		CONTINUED												
PAFZZ	5935-201-3534	RF PLUG USED ON MODELS 24782-PH-54 AND 42747-PH-57 M39012-16-0001 (81349) CONNECTOR, RECEPTACLE, ELECTRICAL J6... USED ON MODELS 24782-PH-54 AND 42747-PH-57	EA	1	*	*	*	*	*	*		3		J6
PAFZZ	5935-636-6266	2711 (03350) CONNECTOR, RECEPTACLE, ELECTRICAL J2... USED ON MODEL 24782-PH-54	EA	1	*	*	*	*	*	*		3		J2
PAFZZ	5935-642-3330	11300 (74868) CONNECTOR, RECEPTACLE, ELECTRICAL J1... USED ON MODELS 24782-PH-54 AND 42747-PH-57	EA	1	*	*	*	*	*	*		3		J1
PAFZZ	5935-149-2694	SC8126430 (80063) CONNECTOR, RECEPTACLE, ELECTRICAL J7... USED ON MODELS 24782-PH-54 AND 42747-PH-57	EA	1	*	*	*	*	*	*		3		J7
XDFZZ		P310A8 (71785) COUPLER, TRANSMISSION LINE T1 USED ON MODELS 24782-PH-54 AND 42747-PH-57	EA	1	*	*	*	*	*	*				T1
PAFZZ	5985-296-2468	42184 (65597) COUPLER, TRANSMISSION LINE T2 USED ON MODELS 24782-PH-54 AND 42747-PH-57	EA	1	*	*	*	*	*	*		3		T2
XDFZZ		42185 (65597) COUPLER, TRANSMISSION LINE T3 USED ON MODELS 24782-PH-54 AND 42747-PH-57	EA	1	*	*	*	*	*	*				T3
PAFZZ	5960-166-7648	42186 (65597) ELECTRON TUBE V4 USED ON MODEL 24782- PH-54	EA	1	*	*	*	*	*	*		100		V4
XDFZZ		0B2 (81349) ELECTRON TUBE V4 USED ON MODEL 42747- PH-57	EA	1	*	*	*	*	*	*				V4
PAFZZ	5960-166-7663	0B2WA (81349) ELECTRON TUBE V1 USED ON MODEL 24782- PH-54	EA	1	*	*	*	*	*	*		100		V1
PAFZZ	5960-264-3002	12AU7 (81349) ELECTRON TUBE V2 USED ON MODELS 24782- PH-54 AND 42747-PH-57	EA	1	*	*	*	*	*	*		100		V2
PAFZZ	5960-669-6861	5750-6BE6M (81349) ELECTRON TUBE V3 USED ON MODELS 24782- PH-54 AND 42747-PH-57	EA	1	*	*	*	*	*	*		100		V3
PAFZZ	5960-262-0210	6005-6AQ5M (81349) ELECTRON TUBE V1 USED ON MODEL 42747- PH-57	EA	1	*	*	*	*	*	*		100		V1
PACZZ	5920-199-3968	6189-12AU7WA (81350) FUSE, CARTRIDGE F1 USED ON MODELS..... 24782-PH-54 AND 42747-PH-57	EA	1	*	*	*	*	*	*		50		F1
PAFZZ	5970-356-0550	MDL8-10 (71400) INSULATOR, STANDOFF NO-REF-DESIG USED ON MODEL 42747-PH-57	EA	1	*	*	*	*	*	*		3		
		27966 (65597)												

(1) SME CODE	(2) FEDERAL STOCK NUMBER	(3) DESCRIPTION REFERENCE NUMBER & MFR. CODE    USABLE ON CODE	(4) UNIT OF MEAS	(5) QTY INC IN UNIT	(6) 30-DAY DS MAINT ALLOWANCE			(7) 30-DAY GS MAINT ALLOWANCE			(8) 1-YR ALW PER 100 EQUIP CNTGTY	(9) DEPOT MAINT ALW PER 100 EQUIP	(10) ILLUSTRATION	
					(a)	(b)	(c)	(a)	(b)	(c)			(a)	(b)
					1-20	21-50	51-100	1-20	21-50	51-100			FIGURE NO	ITEM NO.
PAFFD	6105-510-7584	MOTOR, ALTERNATING CURRENT PAFFD CBCL1043 (02598)	EA	1	*	*	*	*	*	*		2		B1
PAFZZ	5950-351-5418	REACTOR L4 USED ON MODELS 24782-PH-54 AND 42747-PH-57 CS13036 (59652)	EA	1	*	*	*	*	*	*		2		L4
PAFZZ	5905-279-1756	RESISTOR, FIXED, COMPOSITION R8 USED.. ON MODELS 24782-PH-54 AND 42747-PH-57 RC20GF151K (81349)	EA	1	*	*	*	*	*	*		3		R8
PAFZZ	5905-171-2005	RESISTOR, FIXED, COMPOSITION R7 USED.. ON MODELS 24782-PH-54 AND 42747-PH-57 RC20GF471K (81349)	EA	1	*	*	*	*	*	*		3		R7
XDFZZ		RESISTOR, FIXED, COMPOSITION R13 USED.. ON MODELS 24782-PH-54 AND 42747-PH-57 RC32GF102K (81349)	EA	2	*	*	*	*	*	*				R13
XDFZZ		RESISTOR, FIXED, COMPOSITION R14 USED.. ON MODELS 24782-PH-54 AND 42747-PH-57 RC32GF102K (81349)	EA	REF	*	*	*	*	*	*				R14
XDFZZ		RESISTOR, FIXED, WIRE WOUND R15 USED ON MODELS 24782-PH-54 AND 42747-PH-57 RM32G312 (81349)	EA	1	*	*	*	*	*	*				R15
XDFZZ		RESISTOR, FIXED, COMPOSITION R10 USED.. ON MODELS 24782-PH-54 AND 42747-PH-57 RC32GF123K (81349)	EA	1	*	*	*	*	*	*				R10
PAFZZ	5905-369-6923	RESISTOR, FIXED, COMPOSITION R9 USED.. ON MODELS 24782-PH-54 AND 42747-PH-57 RC32GF223K (81349)	EA	2	*	*	*	*	*	*		3		R9
PAFZZ	5905-369-6923	RESISTOR, FIXED, COMPOSITION R11 USED.. ON MODELS 24782-PH-54 AND 42747-PH-57 RC32GF223K (81349)	EA	REF	*	*	*	*	*	*				R11
XDFZZ		RESISTOR, FIXED, COMPOSITION R3 USED.. ON MODELS 24782-PH-54 AND 42747-PH-57 RC32GF393K (81349)	EA	2	*	*	*	*	*	*				R3
XDFZZ		RESISTOR, FIXED, COMPOSITION R4 USED.. ON MODELS 24782-PH-54 AND 42747-PH-57 RC32GF393K (81349)	EA	REF	*	*	*	*	*	*				R4
PAFZZ	5905-192-3987	RESISTOR, FIXED, COMPOSITION R1 USED.. ON MODELS 24782-PH-54 AND 42747-PH-57 RC20GF104K (81349)	EA	4	*	*	*	*	*	*		3		R1
PAFZZ	5905-192-3987	RESISTOR, FIXED, COMPOSITION R2 USED.. ON MODELS 24782-PH-54 AND 42747-PH-57 RC20GF104K (81349)	EA	REF	*	*	*	*	*	*				R2
PAFZZ	5905-192-3987	RESISTOR, FIXED, COMPOSITION R5 USED.. ON MODELS 24782-PH-54 AND 42747-PH-57 RC20GF104K (81349)	EA	REF	*	*	*	*	*	*				R5
PAFZZ	5905-192-3987	RESISTOR, FIXED, COMPOSITION R6 USED.. ON MODELS 24782-PH-54 AND 42747-PH-57 RC20GF104K (81349)	EA	REF	*	*	*	*	*	*				R6
PAFZZ	5905-185-6946	RESISTOR, FIXED, COMPOSITION R12 USED.. ON MODELS 24782-PH-54 AND 42747-PH-57 RC20GF474K (81349)	EA	1	*	*	*	*	*	*		3		R12
PAFZZ	5935-686-9955	SOCKET, ELECTRON TUBE XV2 USED ON..... CONTINUED	EA	3	*	*	*	*	*	*		3		XV2

SECTION VII

TM11-5950-202-14P

(1) SMR CODE	(2) FEDERAL STOCK NUMBER	(3) DESCRIPTION REFERENCE NUMBER & MFR CODE USABLE ON CODE	(4) UNIT OF MEAS	(5) QTY INC IN UNIT	(6) 30-DAY DS MAINT AT LOWANCE			(7) 30-DAY GS MAINT ALLOWANCE			(8) 1-YR ALW PER 100 EQUIP CHTGCT	(9) DEPOT MAINT ALW PER 100 EQUIP	(10) ILLUSTRATION	
					(a)	(b)	(c)	(a)	(b)	(c)			(a)	(b)
					1-20	21-50	51-100	1-20	21-50	51-100			FIGURE NO	ITEM NO.
		CONTINUED												
PAFZZ	5935-686-9955	MODELS 24782-PH-54 AND 42747-PH-57 TS102P01 (81350) SOCKET, ELECTRON TUBE XV3 USED ON.....	EA	REF	*	*	*	*	*	*				XV3
PAFZZ	5935-686-9955	MODELS 24782-PH-54 AND 42747-PH-57 TS102P01 (81350) SOCKET, ELECTRON TUBE XV4 USED ON.....	EA	REF	*	*	*	*	*	*				XV4
XDFZZ		MODELS 24782-PH-54 AND 42747-PH-57 TS102P01 (81350) SOCKET, ELECTRON TUBE XV1 USED ON.....	EA	1	*	*	*	*	*	*				XV1
XDFZZ		MODELS 24782-PH-54 AND 42747-PH-57 TS103P01 (81350) SHIELD, ELECTRON TUBE NO-REF-DESIG USED. ON MODELS 24782-PH-54 AND 42747-PH-57	EA	1	*	*	*	*	*	*				
XDFZZ		MODELS 24782-PH-54 AND 42747-PH-57 TS102U02 (81350) SHIELD, ELECTRON TUBE NO-REF-DESIG USED. ON MODELS 24782-PH-54 AND 42747-PH-57	EA	2	*	*	*	*	*	*				
PAFZZ	5960-264-3004	MODELS 24782-PH-54 AND 42747-PH-57 TS102U03 (81350) SHIELD, ELECTRON TUBE NO-REF-DESIG USED. ON MODELS 24782-PH-54 AND 42747-PH-57	EA	1	*	*	*	*	*	*		10		
PAFZZ	3020-540-9590	MODELS 24782-PH-54 AND 42747-PH-57 TS103U02 (81350) SPROCKET WHEEL NO-REF-DESIG USED ON.....	EA	1	*	*	*	*	*	*			3	
PAFZZ	3020-322-5810	MODEL 42747-PH-57 73123 (65597) SPROCKET WHEEL NO-REF-DESIG USED ON.....	EA	1	*	*	*	*	*	*				3
PAFZZ	5950-646-3615	MODELS 24782-PH-54 AND 42747-PH-57 73124 (65597) TRANSFORMER, AUDIO L1 USED ON MODELS..	EA	1	*	*	*	*	*	*			3	L1
XDFZZ		24782-PH-54 AND 42747-PH-57 802ET193 (94486) TRANSFORMER, RADIO FREQUENCY L2 USED..	EA	1	*	*	*	*	*	*				L2
		ON MODELS 24782-PH-54 AND 42747-PH-57 42174 (65597)												

INDEX-FEDERAL STOCK NUMBER AND REFERENCE NUMBER  
 CROSS-REFERENCE TO FIGURE AND ITEM NUMBER

STOCK NUMBER	FIGURE NO.	ITEM NO.	STOCK NUMBER	FIGURE NO.	ITEM NO.
3020-322-5810			5920-199-3968		F1
3020-540-9590			5935-149-2694		J7
3030-203-1586			5935-201-3534		J6
5505-171-2005		R7	5935-636-6266		J2
5505-185-6946		R12	5935-642-3330		J1
5905-192-3987		R1	5935-686-9955		XV2
5905-192-3987		R2	5935-686-9955		XV3
5905-192-3987		R5	5935-686-9955		XV4
5905-192-3987		R6	5935-835-0508		
5905-279-1756		R8	5935-904-4050		
5905-369-6923		R11	5950-228-7598		L3
5905-369-6923		R9	5950-351-5418		L4
5905-500-6847		R17	5950-524-0039		
5905-500-6847		R18	5950-646-3615		I1
5905-583-6428		R17	5960-166-7648		V4
5905-583-6428		R18	5960-166-7663		V1
5910-112-7399		C20	5960-262-0210		V1
5910-171-3214		C15	5960-264-3002		V2
5910-171-3214		C16	5960-264-3004		
5910-521-7918		C21	5960-669-6861		V3
5910-762-2945		C14	5970-356-0550		
5910-899-2538		C3	5985-296-2468		T2
5910-899-2538		C7	6105-510-7584		B1

REFERENCE NO.	MFR CODE	FIG. NO.	ITEM NO.	REFERENCE NO.	MFR CODE	FIG. NO.	ITEM NO.
CBCL18H3	02598		B1	RC20GF471K	81349		R7
CK63Y103Z	81349		C4	RC20GF474K	81349		R12
CK63Y103Z	81349		C8	RC32GF102K	81349		R13
CK63Y103Z	81349		C11	RC32GF102K	81349		R14
CK63Y103Z	81349		C19	RC32GF123K	81349		R10
CMA3030	14655		C21	RC32GF223K	81349		R9
CMA3050-7	14655		C21	RC32GF223K	81349		R11
CM20B101K	81349		C9	RC32GF393K	81349		R3
CM20B101K	81349		C10	RC32GF393K	81349		R4
CM20B21K	81349		C3	RW32G312	81349		R15
CM20B271K	81349		C7	SCB126430	80063		J1
CM20B471K	81349		C14	TS102P01	81350		XV2
CM30B102K	81349		C12	TS102P01	81350		XV3
CM30B222K	31349		C13	TS102P01	81350		XV4
CM30E252-1PCT	53021		C1	TS102U02	81350		
CM30E252-1PCT	53021		C5	TS102U03	81350		
CP53B1EF205K	81349		C20	TS103P01	81350		XV1
CP65B1DE105K	81349		C15	TS103U02	81350		
CP65B1DE105K	81349		C16	UG27BC	80098		
CP65B1EF105K	81349		C15	OB2	81349		V4
CP65B1EF105K	81349		C16	OB2WA	81349		V4
CS13836	59652		L4	11300	74868		J2
JM9598	71450		R17	116088	65597		
JM9598	71450		R18	12AU7	81349		V1
MDL8-10	71400		F1	19-6848	96256		L3
MX148	71590		R17	2711	03350		J6
MX148	71590		R18	27966	65597		
M39012-16-0001	81349			42174	65597		L2
P310AB	71785		J7	42184	65597		T1
RC20GF104K	81349		R1	42185	65597		T2
RC20GF104K	81349		R2	42186	65597		T3
RC20GF104K	81349		R5	5750-6BE6W	81349		V2
RC20GF104K	81349		R6	6005-6AQ5W	81349		V3
RC20GF151K	81349		R8	6189-12AU7WA	81350		V1

SECTION IX

TM11-5950-202-14P

REFERENCE NO.	MFR CODE	FIG. NO.	ITEM NO.	REFERENCE NO.	MFR CODE	FIG. NO.	ITEM NO.
73123	<b>65597</b>			9327	<b>71400</b>		
73124	<b>65597</b>			9350X1-2INP3010	<b>90179</b>		
802ET193	<b>94486</b>		<b>LI</b>				

**By Order of the Secretary of the Army:**

**FRED C. WEYAND**  
*General, United States Army*  
*Chief of Staff*

**Official:**

**VERNE L. BOWERS**  
*Major General, United States Army*  
*The Adjutant General*

**Distribution:**

**To be distributed in accordance** with DA Form 12-36, (qty rqr block no. 256) Organizational maintenance requirements for AN/FRN-20.

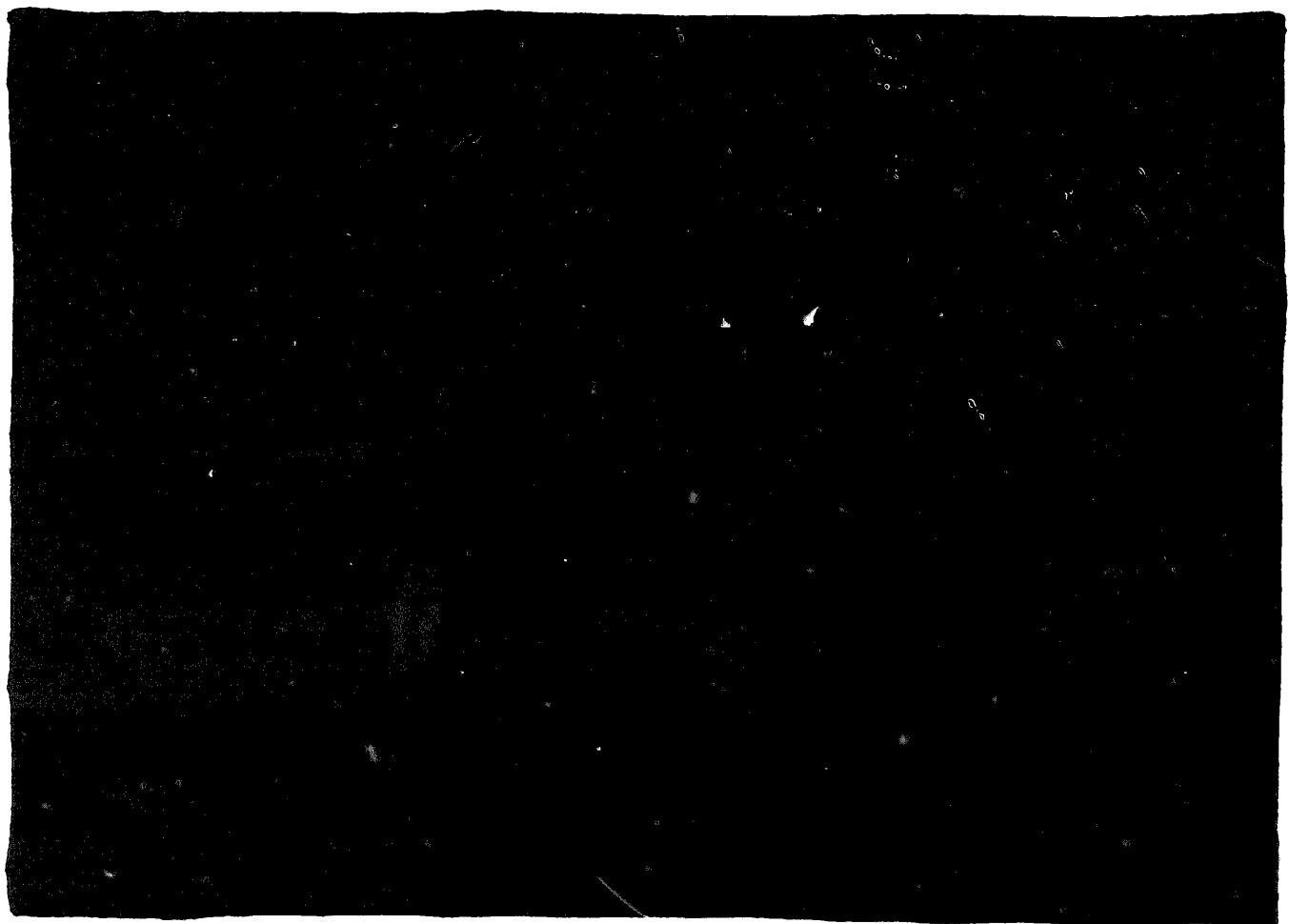
☆U.S. GOVERNMENT PRINTING OFFICE: 1975-045138/632

**END**

**12-08-82**

**DATE**

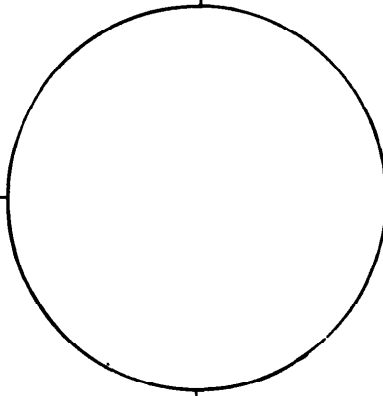
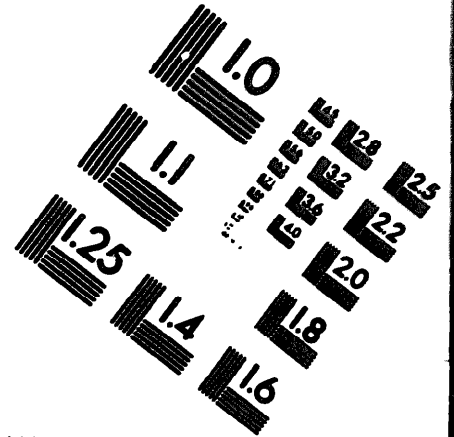
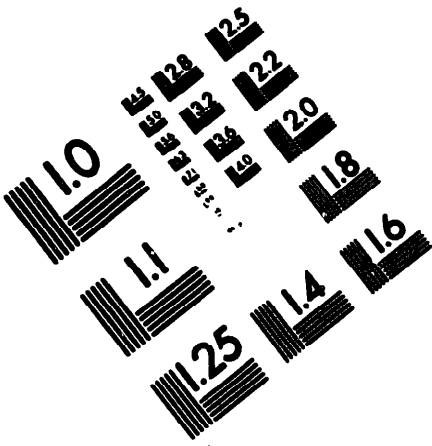






DEPARTMENT OF THE ARMY

MICROFORM TEST TARGET



150 MM

1.0 mm (e= .81 mm)

ABCDEFGHIJKLMN OPQRSTUVWXYZ 1234567890  
abcdefghijklmnopqrstuvwxyz \$%&' /%# 1/2 1/4 —=+ x&@\*

1.5 mm (e= 1.09 mm)

ABCDEFGHIJKLMN OPQRSTUVWXYZ 1234567890  
abcdefghijklmnopqrstuvwxyz \$%&' /%# 1/2 1/4 —=+ x&@\*

2.0 mm (e= 1.37 mm)

ABCDEFGHIJKLMN OPQRSTUVWXYZ  
abcdefghijklmnopqrstuvwxyz  
1234567890 \$%&' /%# 1/2 1/4 —=+ x&@\*

2.5 mm (e= 1.77 mm)

ABCDEFGHIJKLMN OPQRSTUVWXYZ  
abcdefghijklmnopqrstuvwxyz  
1234567890 \$%&' /%# 1/2 1/4 —=+ x&@\*

1.0 mm (e= .81 mm)

ABCDEFGHIJKLMN OPQRSTUVWXYZ 1234567890  
abcdefghijklmnopqrstuvwxyz \$%&' /%# 1/2 1/4 —=+ x&@\*

1.5 mm (e= 1.09 mm)

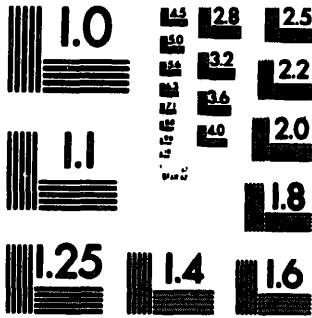
ABCDEFGHIJKLMN OPQRSTUVWXYZ 1234567890  
abcdefghijklmnopqrstuvwxyz \$%&' /%# 1/2 1/4 —=+ x&@\*

2.0 mm (e= 1.37 mm)

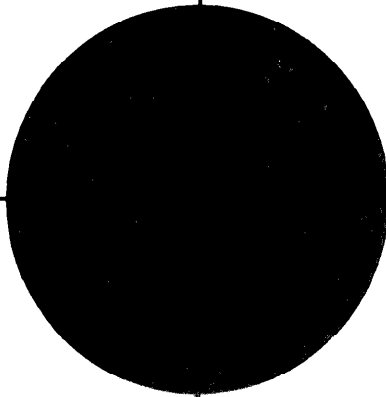
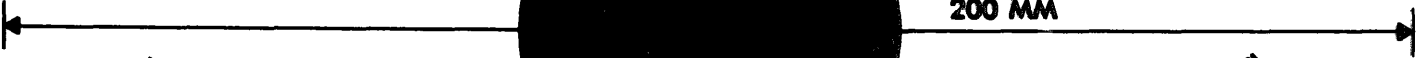
ABCDEFGHIJKLMN OPQRSTUVWXYZ  
abcdefghijklmnopqrstuvwxyz  
1234567890 \$%&' /%# 1/2 1/4 —=+ x&@\*

2.5 mm (e= 1.77 mm)

ABCDEFGHIJKLMN OPQRSTUVWXYZ  
abcdefghijklmnopqrstuvwxyz  
1234567890 \$%&' /%# 1/2 1/4 —=+ x&@\*



200 MM



250 MM

